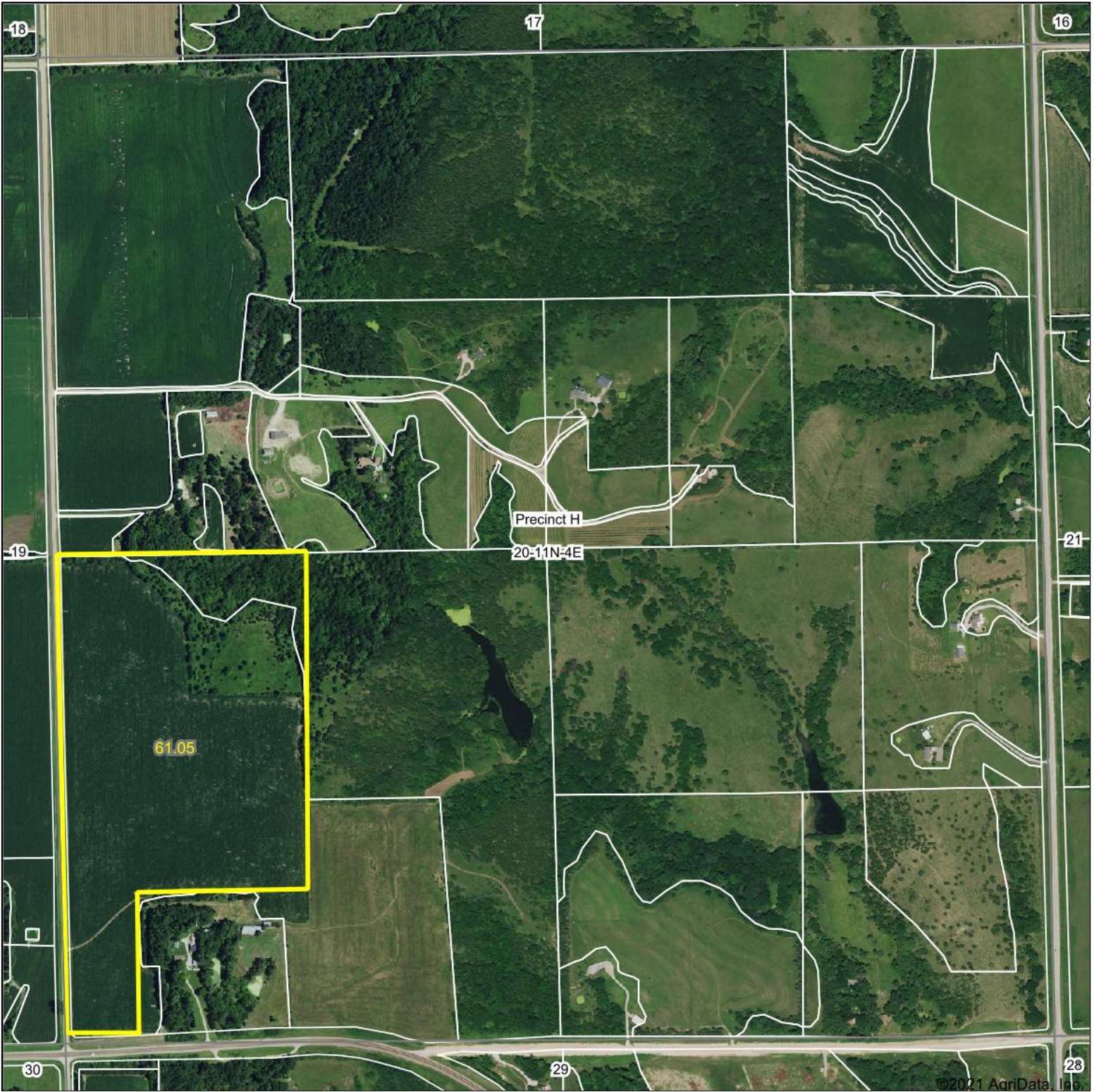


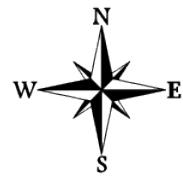
Aerial Map



Map Center: 40° 54' 30.37, -96° 59' 47.52



20-11N-4E
Seward County
Nebraska



8/3/2021



Maps Provided By:

CUSTOMIZED ONLINE MAPPING
© AgriData, Inc. 2021 www.AgriDataInc.com

Field borders provided by Farm Service Agency as of 5/21/2008.